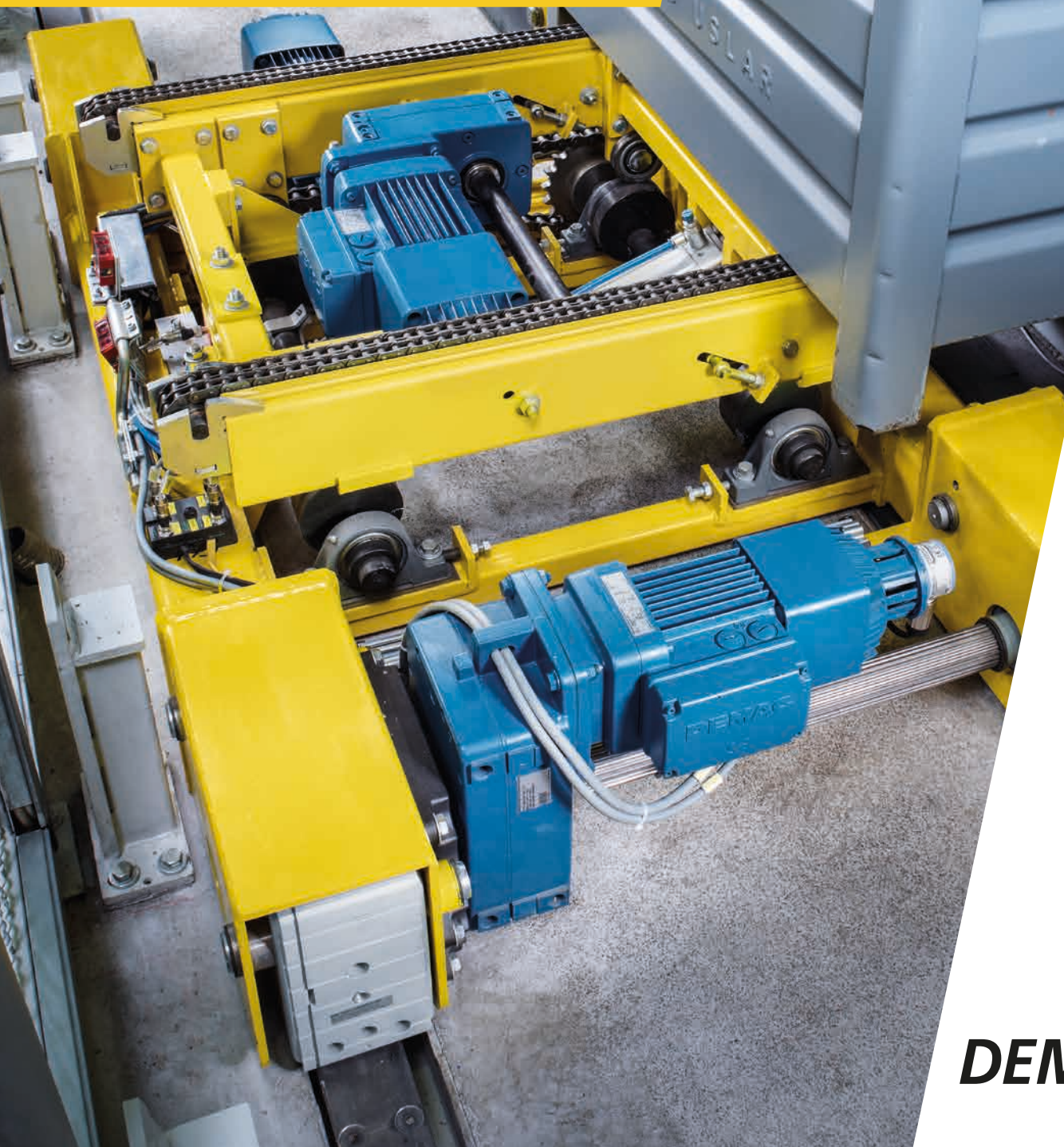


Solutions to meet your needs

**Drives for storage and
retrieval machines**



DEMAG



40529-6-2

40529-6-2



We keep your business on the move.

As a leading supplier of industrial drives, we offer the entire range of products – from individual sub-assemblies to complete travel units with controls and safety monitoring.

All components are designed to match precisely for perfect drive element combinations and smart controls for highly efficient integrated systems.

Demag modular drives – a perfect blend of proven components

We use our modular drive system to provide cost-effective solutions to meet specific requirements on the basis of standardised sub-assemblies. This can save you valuable project engineering time and give you the certainty of reliable product configurations. Benefit from our comprehensive plant and engineering expertise.

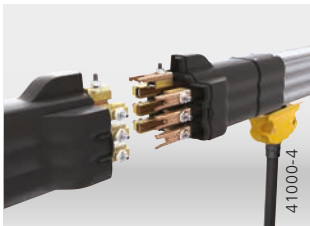


Demag Dedrive Pro 880 frequency inverters



Demag Dedrive Compact STO frequency inverters

POWER SUPPLY LINES AND CONDUCTOR LINES



Demag DCL-Pro compact conductor line:

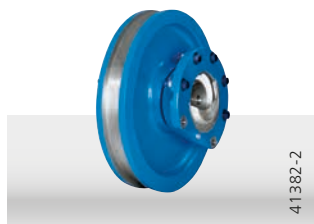
- Up to seven conductors to supply power and control signals
- 200 A in continuous operation
- Rigid housing with honeycomb profile section

FREQUENCY INVERTERS



WHEEL SYSTEMS

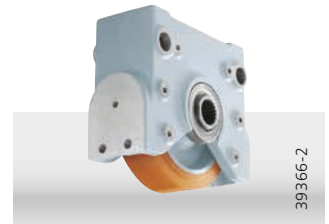
- Wheels and wheel block systems designed as modular solutions for a wide variety of applications thanks to universal connection arrangements.



DWS wheel sets:
3 sizes with load capacities from
28 t to 63 t



RS wheel system:
For special applications, e.g. at high
temperatures, up to 18 t per wheel



LRS travel wheel system:
Simple system solution, large ground
clearance, solutions ready for instal-
lation for up to 240 m/min

For more than 200 years, we have kept your business on the move.

As a specialist for industrial drives, we supply solutions to meet your needs – and we have been pioneers of innovation in the materials handling sector in the last two centuries.



1819 - Mechanische Werkstätte is established in Germany (Wetter on the Ruhr). Production of steam engines.



1840 - The Company is the first crane factory in Germany and builds overhead travelling cranes in series.



1912 - The first electrically driven rope hoist from Deutsche Maschinenfabrik (Demag) comes onto the market.



1962 - Demag builds the first automatic high-bay warehouse in Germany to store 7 million books.



1963 - Our modular Demag KBK crane construction kit paves the way for production in many sectors of industry.



1980 - The RS wheel block system becomes part of our comprehensive industrial drive product range.



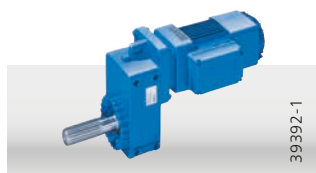
1989 - The first fully automated paper roll store with our own warehouse management system enters service.



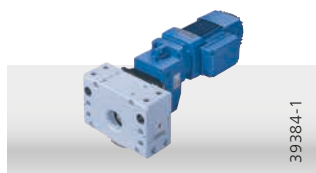
1997 - DRS universal wheel block system for loads weighing up to 40 t



2014 - The multiple award-winning V-type crane revolutionises the market for overhead travelling cranes.



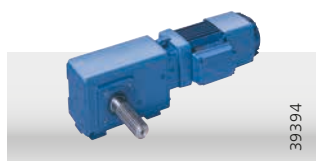
A offset geared motors from 130 to 11,500 Nm



Fully configured travel units



D helical geared motors from 90 to 5,800 Nm



W angular geared motors from 120 to 12,000 Nm

GEARED MOTORS

- Excellent line-fed travel motors for one or two speeds
- Conical-rotor brake motors for highest demands in starting and stopping applications
- Output range from 0.18 to 45 kW



DRS wheel block system:
8 sizes, wheel diameters: 112 to 500 mm, up to 40 t per wheel

From individual components to complete systems

Drive components



Simple selection



The Demag modular drive system can be used for a wide variety of solutions to meet virtually any application requirements.

For use on storage and retrieval machines, we have compiled a selection of typical geared motor and wheel combinations.

Travel unit							
Load [t]	Speed [m/min]	DRS wheel block system		Drive unit		[kW]	max. Brake torque
		Driven	Non-driven	Gearbox	Motor		
5	120	DRS 200 A50 E0	DRS 200 NA E0	WUE40DD (i = 13.9)	ZBA100B4 B050	4.0	50 Nm
	160	DRS 200 A50 E0	DRS 200 NA E0	WUE40DD (i = 11.2)	ZBA112A4 B050	4.0	50 Nm
	180	DRS 250 A65 B0	DRS 250 NA B0	WUE50DD (i = 9.59)	ZBA132AL4 B140	5.5	140 Nm
6	120	DRS 250 A65 B0	DRS 250 NA B0	WUE50DD (i = 17.0)	ZBA112A4 B050	4.0	50 Nm
	160	DRS 250 A65 B0	DRS 250 NA B0	WUE50DD (i = 11.8)	ZBA112A4 B050	4.0	50 Nm
	180	DRS 250 A65 B0	DRS 250 NA B0	WUE50DD (i = 9.59)	ZBA132AL4 B140	5.5	140 Nm
8	120	DRS 250 A65 B0	DRS 250 NA B0	WUE50DD (i = 17.0)	ZBA112A4 B050	4.0	50 Nm
	160	DRS 250 A65 B0	DRS 250 NA B0	WUE50DD (i = 13.1)	ZBA132AL4 B140	5.5	140 Nm
	180	DRS 315 A65 B0	DRS 315 NA B0	WUE60TD (i = 12.6)	ZBA132B4 B140	7.5	140 Nm
10	120	DRS 315 A65 B0	DRS 315 NA B0	WUE60TD (i = 20.8)	ZBA132AL4 B140	5.5	140 Nm
	160	DRS 315 A65 B0	DRS 315 NA B0	WUE60TD (i = 16.4)	ZBA132B4 B140	7.5	140 Nm
	180	DRS 315 A65 B0	DRS 315 NA B0	WUE60TD (i = 12.6)	ZBA132B4 B140	7.5	140 Nm
16	120	DRS 315 A65 B0	DRS 315 NA B0	WUE60TD (i = 20.8)	ZBA132B4 B140	7.5	140 Nm
	160	DRS 315 A65 B0	DRS 315 NA B0	WUE60TD (i = 16.4)	ZBA132C4 B140	9.5	140 Nm
	180	DRS 400 A75 B0	DRS 400 NA B0	WUE70TD (i = 17.7)	ZBA160AL4 B140	11.0	140 Nm
Transfer unit							
[kg]							
500 - 1500	120	DRS 125 A35 F0	DRS 125 MA35 F0	AME20DD (i = 9.95)	ZBA 90A4 B020	1.1	20 Nm
1000 - 2200	120	DRS 160 A45 F0	DRS 160 MA45 F0	AME30DD (i = 11.6)	ZBA100B4 B050	3.0	50 Nm

Wheels with wheel type E0
and prepared for horizontal guide rollers

Wheels with wheel type B0
and prepared for horizontal guide rollers

Wheels with wheel type F0
and prepared for horizontal guide rollers

Angular geared motors
400 V/50 Hz, F class, IP54

Brake: with manual brake release automatic return (HBL-N) and
with emergency-stop brake lining

Offset geared motor

400 V/50 Hz, F class, IP54

Brake: with manual brake release automatic return (HBL-N) and
with emergency-stop brake lining

Dedrive Pro 880 Frequency Inverters						
Frame size	Rated Voltage			Height [mm]	Width [mm]	Depth [mm]
	400 V	500 V	690 V			
	I_{hd} - heavy duty output current [A]					
R1	1,8 - 10	1,7 - 7,6		409	155	226
R2	12,6 - 17	11 - 14		409	155	249
R3	25 - 32	21 - 27	5,6 - 23	475	172	261
R4	38 - 45	34 - 40		576	203	274
R5	61 - 72	52 - 65	5,6 - 42	730	203	274
R6	87 - 105	77 - 96	49 - 61	726	251	357
R7	145 - 169	124 - 156	84 - 98	880	284	365
R8	206 - 246	180 - 240	119 - 142	963	300	386
R9	293 - 363	302 - 361	174 - 210	955	380	413
R10	361 - 477	330 - 477	255 - 360	1,366	322,3	506
R11	566 - 725	566 - 697	415 - 571	1,566	322,3	506

Dedrive Compact STO						
Size	Rated voltage 3 x 380 to 480 V		Height [mm]	Width [mm]	Depth [mm]	Weight [kg]
	Output current [A]					
1	2,4 - 3,8		190	60	180	1,3
2	5,8 - 9,0		250	60	180	1,7
3	14 - 16,5		250	125	200	2,7
4	25 - 40		250	125	200	3,8
5	45 - 60		250	200	260	8,9
6	75 - 120		400	275	265	21,2
7	150 - 210		510	412	351	45 - 48

DCL-Pro compact conductor line					
Enclosure profile and conductors			Current collector trolley		
Enclosure material	PVC		Number of poles: power	4	
Standard length	[mm]	4,000	Max. number of poles: control signals	3	
Number of conductors/poles	7		Max. rated current at 80 % CDF	40 (Bz) / 20 (Gr)	
Max. suspension distance	[mm]	2,000		40 (Bz) / 20 (SiGr)	
Max. voltage	[VAC]	24 to 690	Max. connection cross-section		
Size	10 15 25 38 56 70		Power Control	6	
Max. permissible current at 100% CDF	[A]	65 80 100 130 175 200		2,5	
Ambient temperature to DIN	[°C]	-30 to +70	Control Cable length	[mm]	2,000
Type of enclosure	IP23 / IP24		Max. travel speed	[m/min]	200
Fire protection	to UL94 / VO spec.				
Min. curve radius	[mm]	800			

For further technical details please contact us.

DEMAG CRANES & COMPONENTS GMBH

Wetter Site
Ruhrstrasse 28
58300 Wetter, Germany
E info@demagcranes.com
T +49 2335 92-0
F +49 2335 92-7676
www.demagcranes.com

DEMAG.....